

Lanco Solar

Simple | Clean | Green | Sustainable | Positive



LSP WWW P-60 Cell
Poly Series

LANCO SOLAR MODULE CHARACTERISTICS

Electrical Data @ STC

	MODEL	LSP230P	LSP235P	LSP240P	LSP245P	LSP250P
Power Max	W	230	235	240	245	250
Short Circuit Current-Isc	A	8.38	8.4	8.41	8.48	8.55
Open Circuit Voltage-Voc	V	36.6	36.8	37.1	37.4	37.5
Current at Max Power-Impp	A	7.97	8.05	8.15	8.19	8.22
Voltage at Max Power-Vmpp	V	28.9	29.2	29.5	29.9	30.4
Fill Factor	%	75.1%	76.0%	77.1%	77.2%	77.9%
Module Efficiency	%	14.0%	14.3%	14.6%	14.9%	15.2%

General Characteristics

Power Tolerance	W	-0 + 5W
System Voltage	V	TUV1000V/UL600V
Operating Temperature	°C	-40 to +85
NOCT	°C	47 +/- 2
Temp coefficient of Current	%/°C	0.06
Temp coefficient of Voltage	%/°C	-0.31
Temp coefficient of Power	%/°C	-0.43

Module Construction Details

No. of cells and Matrix	60 (10 x 6)
Junction Box Rating	IP 65
Junction Box Fuse Rating	15A
Aluminum Frame	AL 6063 T5
Solar Glass	High Transmittance 3.2mm Textured & Tempered Glass
Junction Box Cables	1000 mm long with MC4 compatible connectors

Certifications

Product Certifications	IEC 61215, IEC 61730, IEC 61701
Certification Lab	TUV Rheinland and Intertek
Plant Certifications	ISO 9001:2008, ISO 14001 and OHSAS 18001:2007


Special Features

- 100% inspection by EL - Microcrack free Modules
- Positive Power Tolerance [-0 & +5W]
- Inlaid RFID Tags
- Highly Automated Assembly Line
- High Quality Induction Soldered Joints
- High Fill factor and low series Resistance
- Solar PV modules Suitable for All Climates.
- 10 Year Replacement Warranty on Workmanship

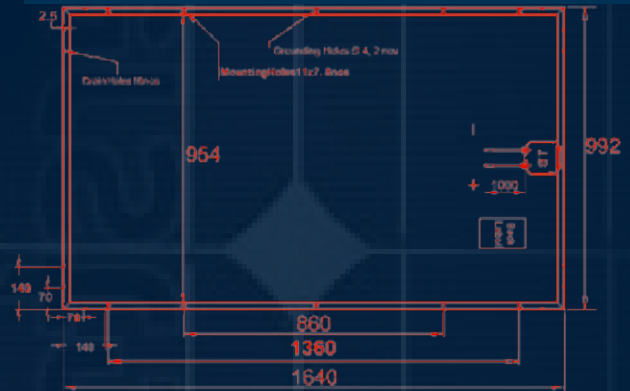
25 Year Power Performance Guarantee



Module Mechanical & Packing Details

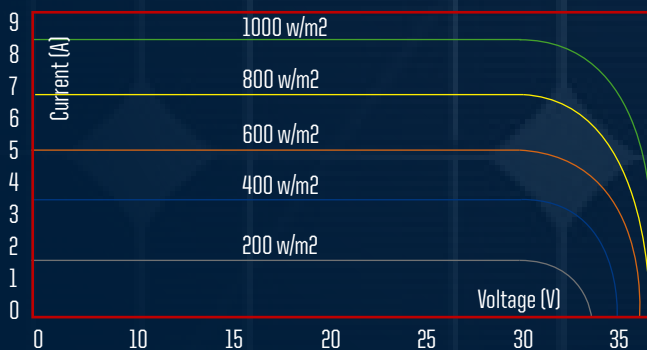
Module size	1640 x 992 x 35 mm +/- 1mm
Module Mounting Dimensions	8 Mounting Holes of Size: 7 x 11mm 4 @ 1360 x 954 +/- 3mm & 4 @ 860 x 954 +/- 3mm
Module Weight	19.25 kg
Frame Joint & Drain Hole details	
No. of Modules in pallet	28 No's
No. of Pallets in 40feet Container	28 No's
No. of Modules per Container	784 No's (180 KW to 196 KW)

Dimensional Drawing as seen from backside

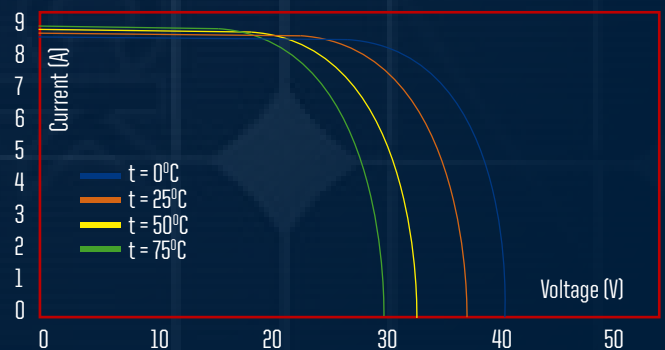


IV Characteristics

IV Curve : Irradiation Dependence



IV Curve : Temperature Dependence



CAUTION: READ SAFETY AND INSTALLATION INSTRUCTIONS BEFORE USING THE PRODUCT.

© Oct 2013 Lanco Solar Pvt Limited. All rights reserved. Specifications included in this datasheet are subject to change without notice

www.lancosolar.com | email : sales@lancosolar.com